

Sinclair  Hammelton

  
Sinclair  
Hammelton  
**For Sale**  
020 8464 5566  
[www.sinclairhammelton.co.uk](http://www.sinclairhammelton.co.uk)

GUIDE PRICE

**£675,000**

**Palace View**

Bromley, BR1 3EP



## PROPERTY SUMMARY

\*\*\*GUIDE PRICE £675,000 TO £700,000\*\*\*

Rarely available is this beautifully presented 1930's three bedroom terrace house situated on the popular Palace Estate. The property is located under 0.5 miles to Bromley South Station with fast train line to London Victoria. The property is modern throughout after being tastefully refurbished by the current owners. Living accommodation comprises a stain glass front door which allows natural light into a spacious hallway leading to a well-proportioned reception room and W/C. There is an open plan kitchen/diner with doors leading onto a private garden. To the first floor are three bedrooms and a four-piece family bathroom. Further benefits include driveway with off street parking for two cars, garage to the rear as well as an outbuilding with electricity which can be used as an office. The property also has potential to extend into the loft. EPC: D

COUNCIL TAX - E

Construction - Traditional

Mains Services -

Heating System -

Broadband -

Mobile coverage -

Restrictive covenants -

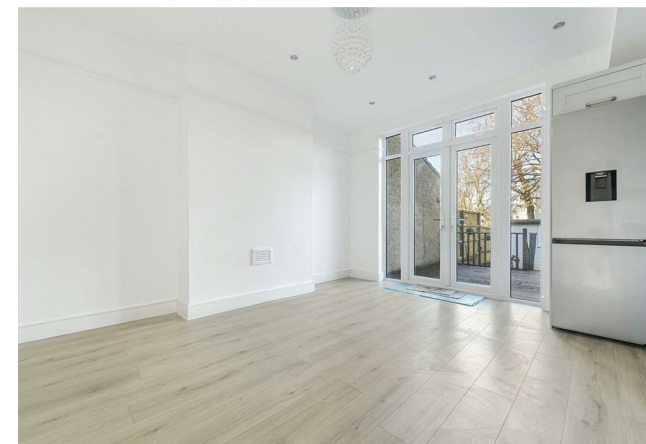
3



1

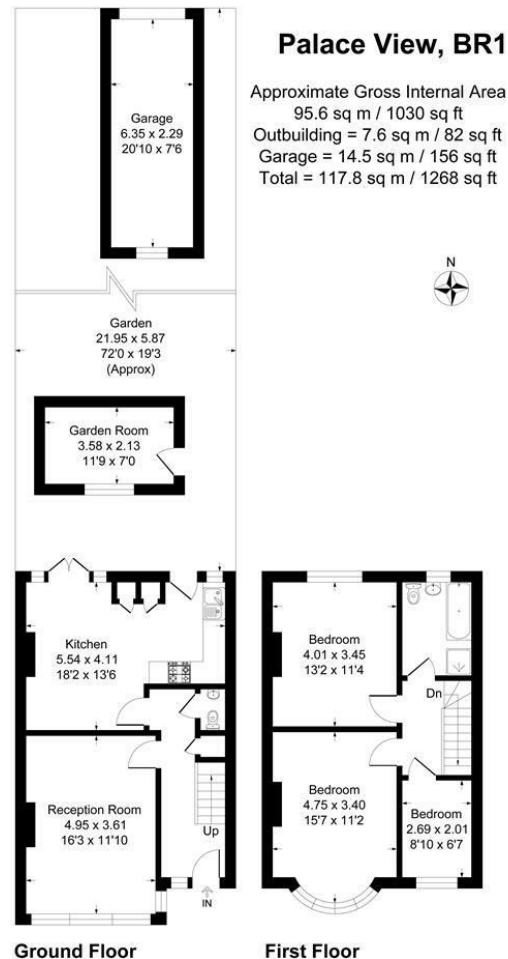


2









This plan is for layout guidance only. Not drawn to scale unless stated. Windows and door openings are approximate. Whilst every care is taken in the preparation of this plan, please check all dimensions, shapes and compass bearings before making any decisions reliant upon them.  
 Produced By Planpix

## LOCAL AUTHORITY

## TENURE

Freehold

## EPC RATING

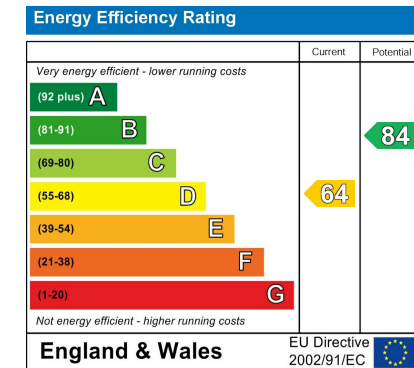
D

## COUNCIL TAX BAND

E

## VIEWINGS

By prior appointment only



Agents Note: Whilst every care has been taken to prepare these particulars, they are for guidance purposes only. All measurements are approximate and are for general guidance purposes only and whilst every care has been taken to ensure their accuracy, they should not be relied upon and potential buyers/tenants are advised to recheck the measurements

**Sinclair** **Hammelton**

## OFFICE ADDRESS

23 High Street  
 Bromley  
 Kent  
 BR1 1LG

## OFFICE DETAILS

0208 464 5566  
 info@sinclairhammelton.co.uk